



Army Institute Of Technology (AIT), Dighi Camp, Pune - 15.

Director : 7249250115, Joint Director : 7249250117, Principal : 7249250186

Exch : 7249250183, 7249250184, 7249250185

Website : www.aitpune.com Email : ait@aitpune.edu.in

Recognised by AICTE and DTE Maharashtra and affiliated to Savitrabai Phule Pune University

Criterion VII – Institutional Value and Best Practices

7.2 Best Practices

AY: 2022-23

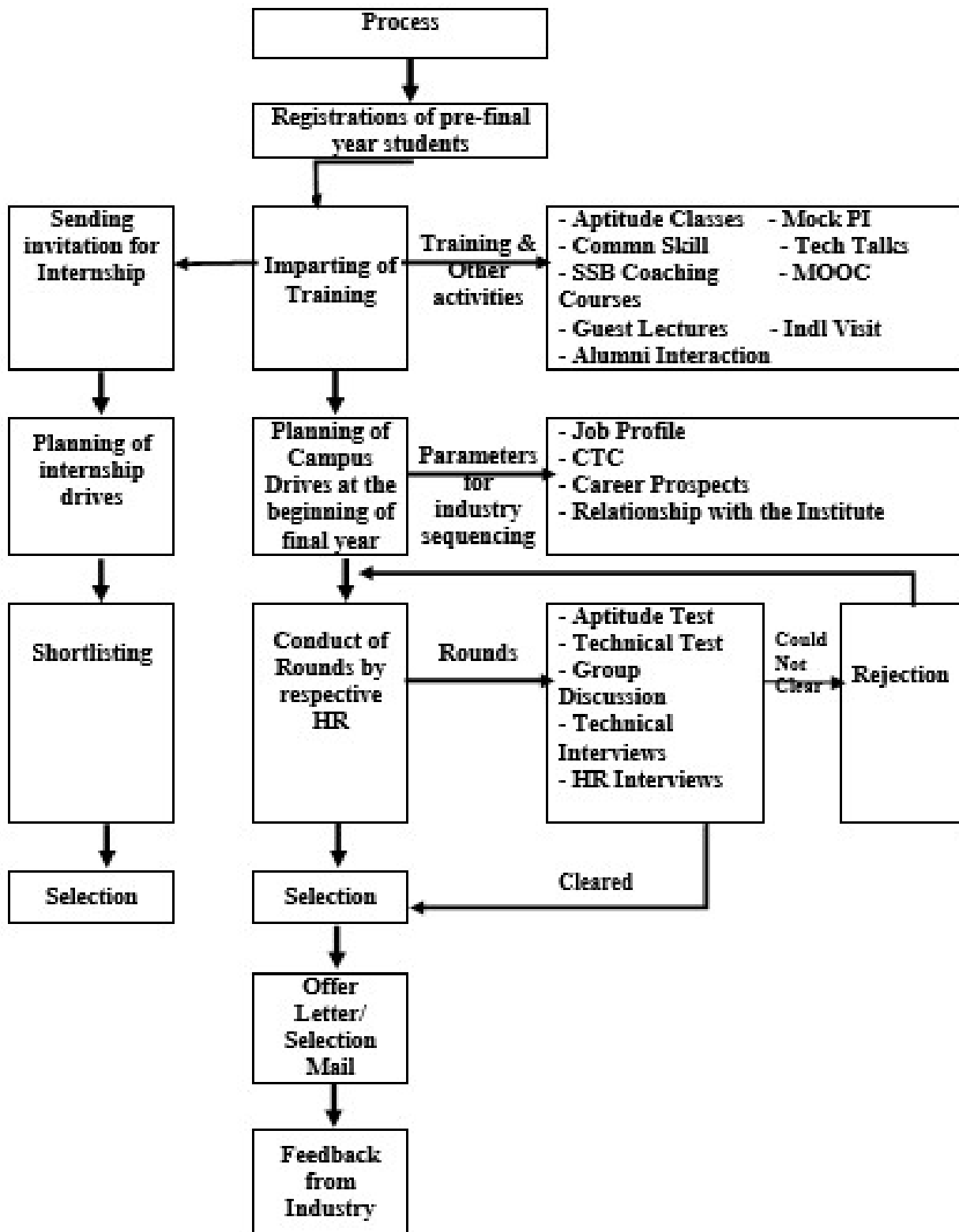
BEST PRACTICE-I

Comprehensive Efforts for Higher Package Placement of Students

AY:2022-23

Sr. No.	Description	Link
1	Placement Activity	https://www.aitpune.com/placement/Seminar%20Training%20%202022%20-%202023.pdf
2	Placements Details	https://www.aitpune.com/placement/Plmt%20Details%202022-23.pdf
3	Placement Summary	https://www.aitpune.com/Placements.aspx
4	Placement Brochure	https://www.aitpune.com/News/Placement%20Brochure%202022-23.pdf
5	Placement Glimpses	https://www.aitpune.com/News/Glimpses_2022-23.pdf

Training and Placement Flowchart



BEST PRACTICE-II

Industry Integration in to foster co-curricular activities including Innovation and Entrepreneurship

AY:2022-23

Sr. No.	Description	Link
1	AIT E_Cell Magazine	https://www.aitecell.in/assets/Udaymita-90d7a35f.pdf
2	Sponsored Lab	Product Innovation Lab by 3DPLM https://www.aitpune.com/Documents/ETC/MOU/MOU_ETC_3DPLM.pdf
3	Industry Linkage Project	Fortytwo Project https://www.aitpune.com/Documents/IT/MOU/Fortytwo%20Technology%20Innovations.PDF
4	S2A2I2 Event	https://www.aitpune.com/News/May2023/12May%202023.jpg https://www.aitpune.com/research/activities/2022-23.pdf
5	Alumni Entrepreneurs	https://www.aitpune.com/placement/ALUMNI%20ENTREPRENEURS2023.pdf
6	Incubation MoU	LemonIdeas: https://www.aitecell.in/assets/LemonIdeas-b256e050.pdf BhauInstitute https://www.aitecell.in/assets/BhauInstitute-2fb8f1a9.pdf