



**Army Institute Of Technology (AIT),** Dighi Camp, Pune - 15.

Director : 7249250115, Joint Director : 7249250117, Principal : 7249250186

Exch : 7249250183, 7249250184, 7249250185

Website : [www.aitpune.com](http://www.aitpune.com) Email : [ait@aitpune.edu.in](mailto:ait@aitpune.edu.in)

Recognised by AICTE and DTE Maharashtra and affiliated to Savitrabai Phule Pune University

---

## **Criterion VII – Institutional Value and Best Practices**

### **7.2 Best Practices**

**AY: 2021-22**

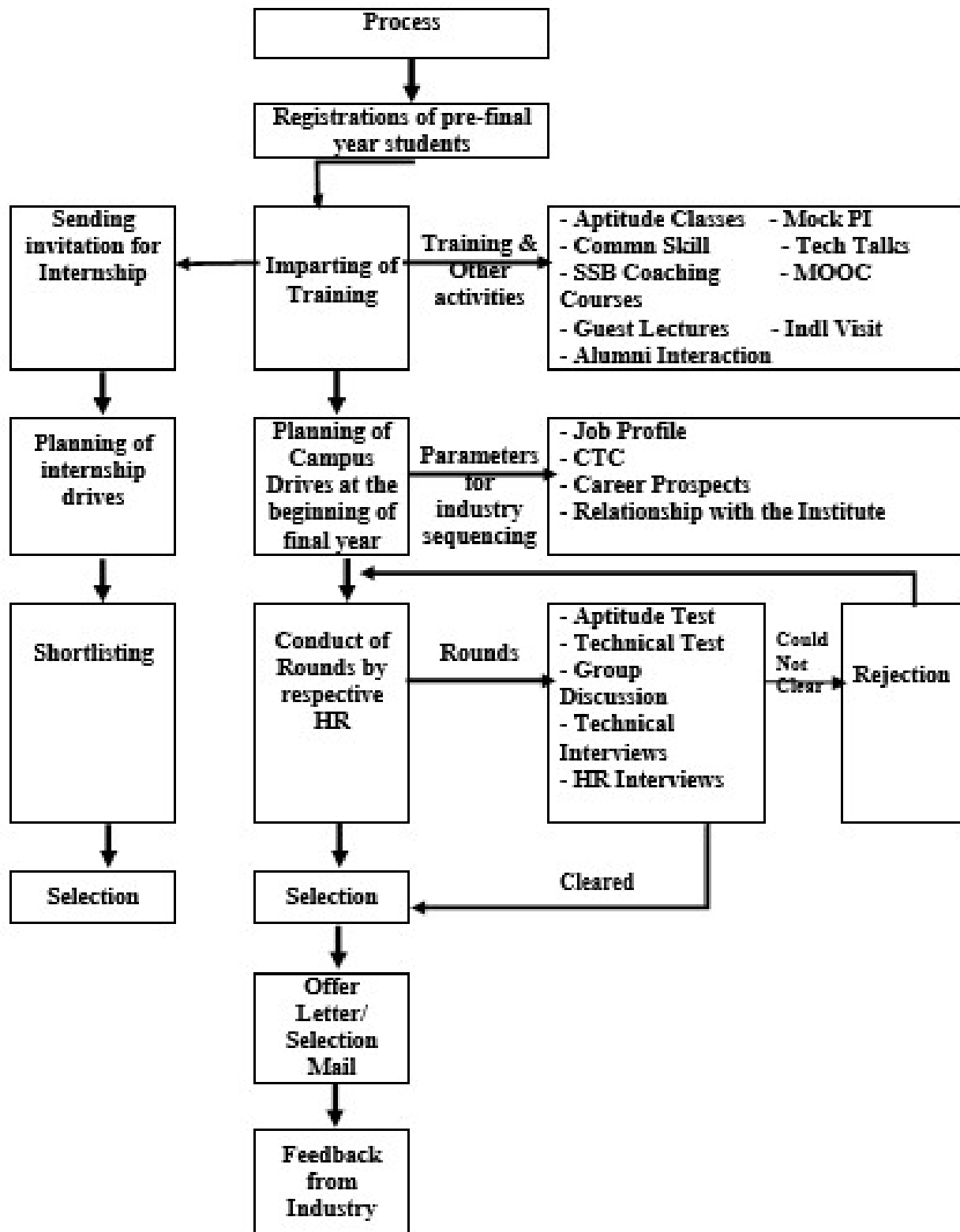
## **BEST PRACTICE-I**

### **Comprehensive Efforts for Higher Package Placement of Students**

**AY:2021-22**

<b>Sr. No.</b>	<b>Description</b>	<b>Link</b>
1	Placement Activity	<a href="https://www.aitpune.com/placement/Seminars_Trainings_2021-22.pdf">https://www.aitpune.com/placement/Seminars_Trainings_2021-22.pdf</a>
2	Placements Details	<a href="https://www.aitpune.com/placement/Placement%20Details%202021-22.pdf">https://www.aitpune.com/placement/Placement%20Details%202021-22.pdf</a>
3	Placement Summary	<a href="https://www.aitpune.com/placement/Plmt%20Summary.pdf">https://www.aitpune.com/placement/Plmt%20Summary.pdf</a>
4	Placement Brochure	<a href="https://www.aitpune.com/News/AIT%20Placement%20Brochure%202021.pdf">https://www.aitpune.com/News/AIT%20Placement%20Brochure%202021.pdf</a>
5	Placement Glimpses	<a href="https://www.aitpune.com/News/Glimpses_2021-22.pdf">https://www.aitpune.com/News/Glimpses_2021-22.pdf</a>

## Training and Placement Flowchart



## **BEST PRACTICE-II**

### **Industry Integration in to foster co-curricular activities including Innovation and Entrepreneurship**

**AY:2021-22**

<b>Sr. No.</b>	<b>Description</b>	<b>Link</b>
1	AIT E_Cell Magazine	<a href="https://www.aitecell.in/assets/udaymita2.0-fe9bdd18.pdf">https://www.aitecell.in/assets/udaymita2.0-fe9bdd18.pdf</a>
2	Sponsored Lab	Product Innovation Lab by 3DPLM <a href="https://www.aitpune.com/Documents/ETC/MOU/MOU_ETC_3_DPLM.pdf">https://www.aitpune.com/Documents/ETC/MOU/MOU_ETC_3_DPLM.pdf</a>
3	Industry Linkage Project	<a href="https://www.aitpune.com/Documents/IT/MOU/Fortytwo%20Technology%20Innovations.PDF">https://www.aitpune.com/Documents/IT/MOU/Fortytwo%20Technology%20Innovations.PDF</a>
4	Alumni Entrepreneurs	<a href="https://www.aitpune.com/placement/ALUMNI%20ENTREPRENEURS2023.pdf">https://www.aitpune.com/placement/ALUMNI%20ENTREPRENEURS2023.pdf</a>
5	Incubation MoU	LemonIdeas: <a href="https://www.aitecell.in/assets/LemonIdeas-b256e050.pdf">https://www.aitecell.in/assets/LemonIdeas-b256e050.pdf</a>  BhauInstitute <a href="https://www.aitecell.in/assets/BhauInstitute-2fb8f1a9.pdf">https://www.aitecell.in/assets/BhauInstitute-2fb8f1a9.pdf</a>